

APPLICATIONS



PUMPING DISTANCE

13 m



WARRANTY



**SANICUBIC® 1 VX**  
with classic control box:  
Product Code: 6101VX  
Barcode: EAN 3308815077611



APPLICATIONS



PUMPING DISTANCE

13 m



WARRANTY



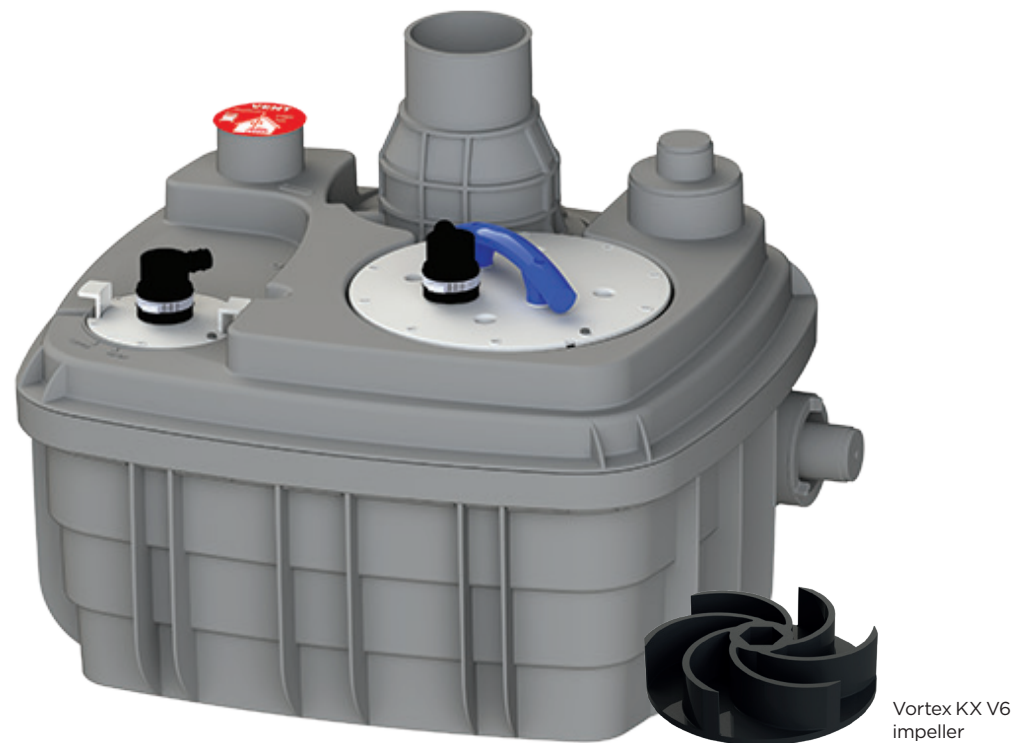
# SANICUBIC® 1 VX



**VORTEX** impeller  
(free passage 50 mm).  
**Direct and safe access**  
to the motors and level sensors.  
Floor-standing device for **easy installation and maintenance**.  
**A large capacity tank**.



**One motor**  
with Vortex impeller.  
**Several inlets available**  
for all configurations.  
**Control box and alarm box**  
for reliable operation.  
IP68 certified **waterproofing**.



Vortex KX V6 impeller

**ACCESSORIES**

**ISOLATION VALVES Guillotine valves for inlet pipes**  
In order to comply with the regulations and to facilitate maintenance operations, isolation valves must be installed on the black water inlets as well as on the discharge pipe.

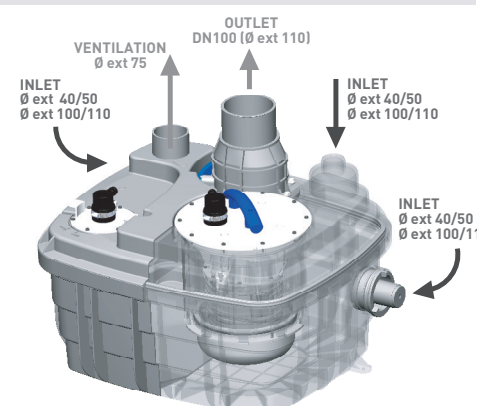


For pipe 50 mm diameter **DN50**  
Product Code: 1109  
Barcode: EAN 3308815061030  
For pipe 110 or 100 mm diameter **DN100**  
Product Code: 1107  
Barcode: EAN 3308815061023

**ACTIVATED CARBON FILTER**  
Neutralises odours.  
Can be used with SANICUBIC®  
Product Code: 1108  
Barcode: EAN 3308815076867

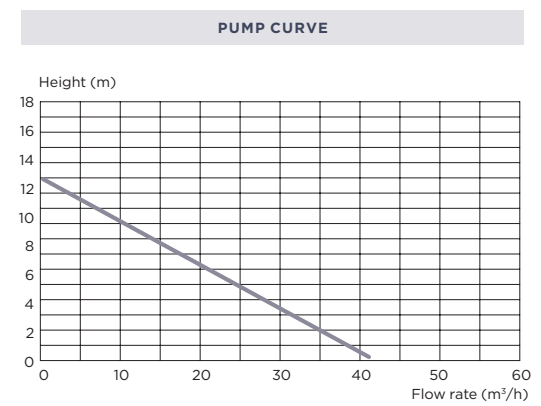


**SEMI-TRANSPARENT VIEW**



**TECHNICAL FEATURES**

<b>Tank volume</b>	60 l
<b>Ø inlet</b>	125/110/100/50/40 mm
<b>Ø Discharge pipework</b>	110
<b>Ø Ventilation</b>	75
<b>Maximum incoming water temperature</b>	70°C intermittently (5 mins max)
<b>Possible connections</b>	Sewage water from several toilets, grey water from bathroom, kitchen, utility room
<b>Flow rate</b>	40 m³/h
<b>Maximum height (Q=0l/min)</b>	13 m
<b>Maximum recommended height</b>	10 m (DN 80) / 6 m (DN 100)
<b>Voltage</b>	220-240 V / 50 Hz
<b>Motor power</b>	2000 W
<b>Maximum current</b>	8 A
<b>On/off level</b>	165/65 mm
<b>Alarm level</b>	230 mm
<b>Weight (including accessories)</b>	30 kg
<b>IP rating</b>	IP 68
<b>IP rating of control box</b>	IPX4
<b>Electrical class</b>	Single phase



- PACKAGING**
- Lifting station with 1 motor
  - 1 Integrated non-return valve
  - Alarm box
  - Control box



Control box (4m Cable)



Wireless alarm unit (5m cable)